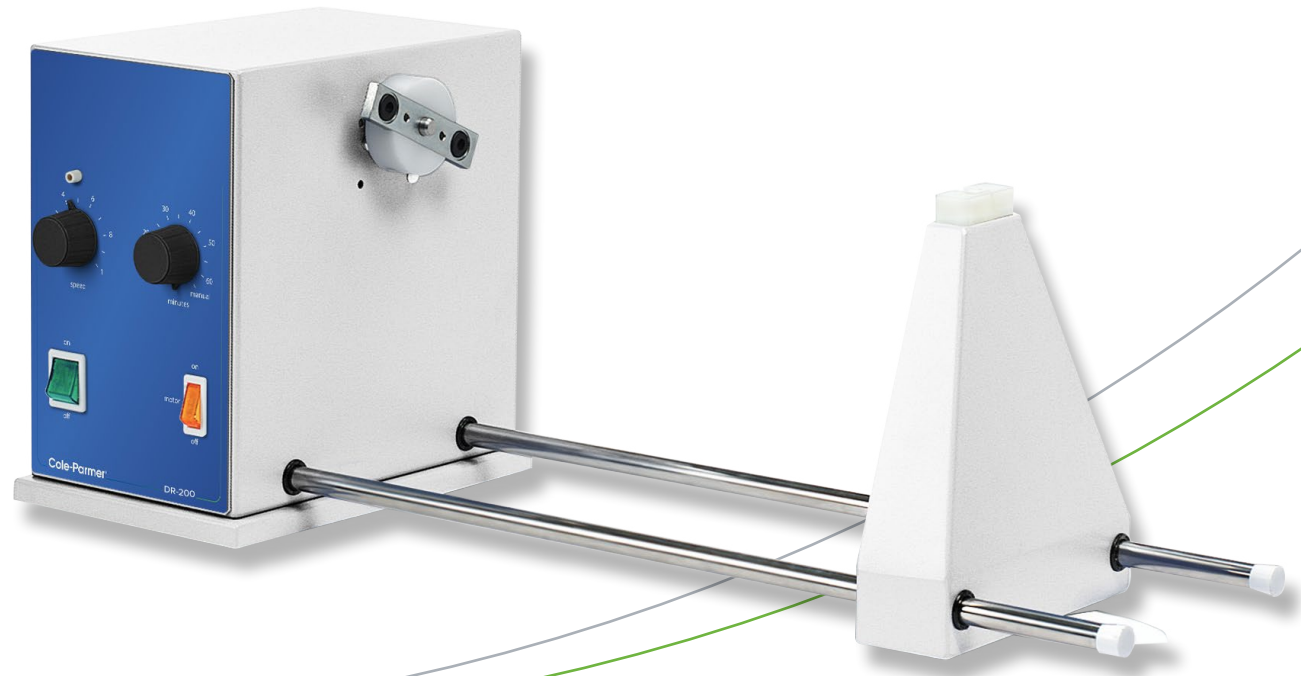


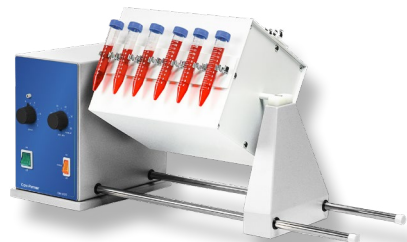
# Cole-Parmer®

## Cole-Parmer® Rotator drive units DR-200

- Highly versatile - accepts a choice of 5 drums
- Built in timer
- Variable speed control 6 to 60rpm



## Cole-Parmer® Rotator drive units, DR-200



51600-92

The rotator drive unit is used in conjunction with a wide range of drums designed to take different sizes and types of vessels. The five drums are designed to give different mixing actions.

Speed of rotation is variable from 6 to 60rpm for a range of mixing applications. For added convenience a built in analogue timer can be set from 10 to 60 minutes. Alternatively the unit can be set for continuous operation.

Test-tube holder, designed to rotate test-tubes in an end-over-end movement. Comprises a square metal drum which can accommodate a choice of plates fitted with tube clips. Up to four plates can be mounted on the drum. Easy fitting via a push button mechanism.

Two platforms, this drum accepts 2 x 250ml conical flasks or reagent bottles for end over end mixing. The samples are securely held in place by a collar that fits around the neck of the flask or bottle and is secured by two washers.

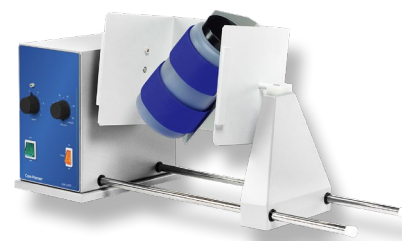
Drum holds the vessel at a 45° angle so it is rolled and turned end over end at the same time giving a vigorous figure of 8 mixing action. The sample container is retained by a strong Velcro strap. Accepts almost any container including reagent bottles, powder jars and paint tins up to 200mm in length and 120mm diameter.

This drum consists of a four segment Perspex® cradle. Each segment is fitted with a fully adjustable Velcro® strap to hold bottles and other containers up to 120mm diameter and up to 300mm in length.

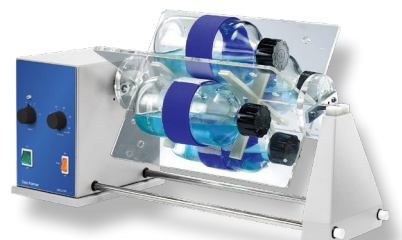
Designed to rotate test-tubes in an end-over-end movement. Comprises a square metal drum which can accommodate a choice of plates fitted with tube clips. Up to four plates can be mounted on the drum. Easy fitting via a push button mechanism.



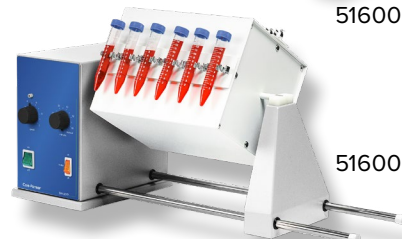
51600-96



51600-97



51600-98



51600-99

## Ordering Information

Description	Ordering Number	Series No.	Model No.	Legacy Sku.
Rotator drive, 230V, 50Hz	51600-06	DR-200	DR-200	STR4
Rotator drive, 120V, 60 Hz	51600-02	DR-200	DR-200-120	STR4/120V/60

## Accessories

Description	Ordering Number	Series No.	Model No.	Legacy Sku.
Drum to hold test tube clip plates	51600-95	DR-200	N/A	STR4/1
Clip plates for 12 x 12mm tubes (per pair)	51600-91	DR-200	N/A	STR1/1
2 Clip plates for 10 x 16mm tubes (per pair)	51600-92	DR-200	N/A	STR1/2
Clip plates for 8 x 19mm tubes (per pair)	51600-93	DR-200	N/A	STR1/3
Clip plates for 7 x 24mm tubes (per pair)	51600-94	DR-200	N/A	STR1/4
Drum with two platforms to hold flasks or bottles	51600-96	DR-200	N/A	STR4/2
Drum with figure 8 mixing action	51600-97	DR-200	N/A	STR4/3
Drum with four segment cradles holding up to four bottles	51600-98	DR-200	N/A	STR4/4
Drum with four segment cradles and four tube racks	51600-99	DR-200	N/A	STR4/5



## Technical Specification

Specification	DR-200
Maximum load, kg	3
Rotation speed	6 to 60rpm
Dimensions, mm (w x d x h)	650 x 250 x 250
Net weight, kg	6.4
Electrical Supply	230V, 50Hz, 50W 120V, 60Hz
IP Rating	31



# WolfLabs

**Pricing on any accessories shown can be found by keying the part number into the search box on our website.**

The specifications listed in this brochure are subject to change by the manufacturer and therefore cannot be guaranteed to be correct. If there are aspects of the specification that must be guaranteed, please provide these to our sales team so that details can be confirmed.

**[www.wolflabs.co.uk](http://www.wolflabs.co.uk)**

**Tel : 01759 301142**

**Fax : 01759 301143**

**[sales@wolflabs.co.uk](mailto:sales@wolflabs.co.uk)**

Please contact us if this literature doesn't answer all your questions.